

512 bit Read/Write, ISO15693 Standard Compliant Contactless RW Identification Device

General Description

The EM4133 is a CMOS integrated circuit intended for use in passive contactless Read/Write transponders full compliant with the ISO 15693 standard.

The user's configurable 448 bit EEPROM memory is organized in 14 words of 32 bits, each word can be irreversibly locked. The memory contains a 64 bit unique serial number.

The ISO 15693 anticollision algorithm allows operating more tags in the field simultaneously. IC is completely ISO 15693 compliant since it includes all ISO15693 mandatory features.

Applications

- ☐ Laundry
- ☐ Access Control
- ☐ Ticketing
- ☐ Asset management

Features

- ☐ ISO15693 Standard: Fully compliant, support all Mandatory and most part of the Optional commands
- ☐ Operating Frequency: 13.56MHz \pm 7kHz (ISM, world-wide licence free available)
- ☐ 64-bit Unique Identifier (UID)
- ☐ 448 bit EEPROM organized in 14 words of 32 bits
- ☐ 302 bit of user's free memory
- ☐ 32 bit password to protect the data memory integrity
- ☐ Quiet Storage feature to speed up inventory processes
- ☐ Lock feature convert EEPROM words in Read Only
- ☐ Secure data transfers using the Login command
- ☐ Smart Electronic Article Surveillance (EAS)
- ☐ Two different on-chip resonant capacitor: 23.5pF and 97pF (selectable by mask option)
- ☐ ISO/IEC 15693 anti-collision algorithm allowing more tags in reader field at the same time
- ☐ No external supply buffer capacitor needed (passive mode)
- ☐ -40 to +85°C temperature range
- ☐ Bonding pads optimised for flip-chip assembly

Typical Operating Configuration

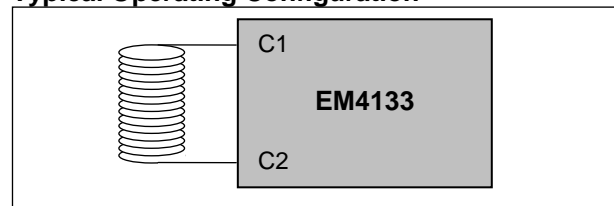


Fig. 1

IC Block Diagram

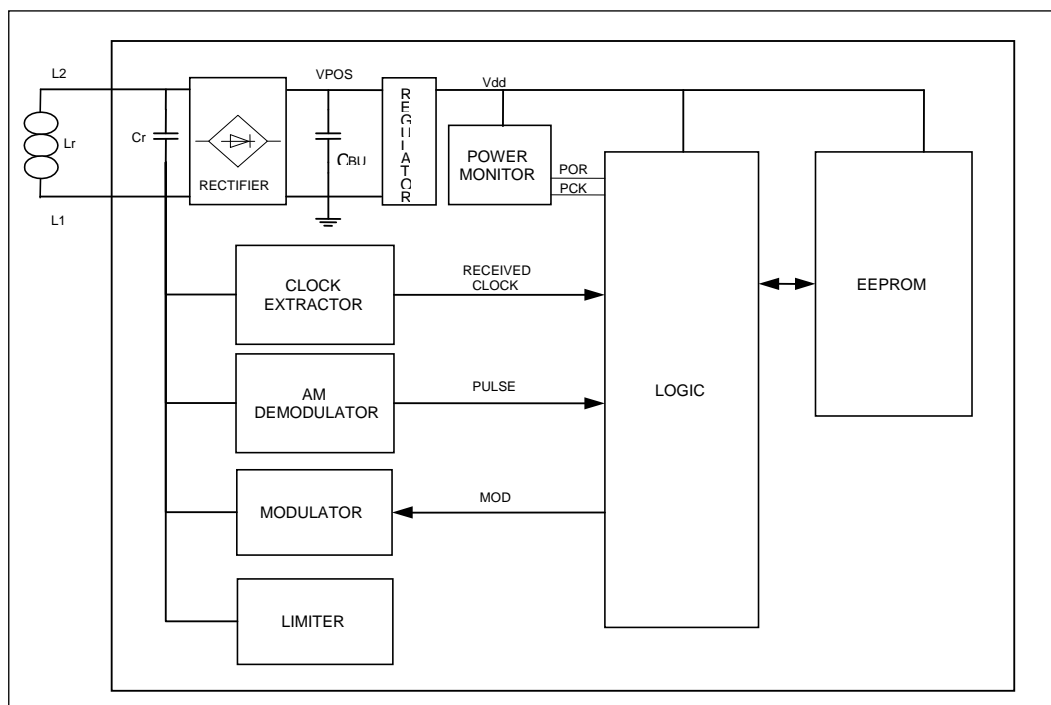


Fig.2

Definitions, abbreviations and symbols

Terms and definitions

Downlink communication

tag to reader communication link

Uplink communication

reader to tag communication link

Modulation index

index equal to $[a-b]/[a+b]$ where a and b are the peak and minimum signal amplitude respectively.

Note: The value of the index may be expressed as a percentage.

Subcarrier

a signal of frequency f_s used to modulate the carrier of frequency f_c

Byte

a byte consists of 8 bits of data designated b1 to b8, from the most significant bit (MSB,b8) to the least significant bit (LSB,b1)

Anticollision loop

Algorithm used to prepare for and handle a dialogue between a VCD and one or more VICCs from several in its energising field.

Abbreviations

AFE	Analog Front-End
AFI	Application family identifier
ASK	Amplitude shift keying
CRC	Cyclic redundancy check
DSFID	Data storage format identifier
EOF	End of frame
LSB	Least significant bit
MSB	Most significant bit
PPM	Pulse position modulation
RF	Radio frequency
RFU	Reserved for future use
SOF	Start of frame
SUM	Super User Memory
SM	System Memory
VCD	Vicinity coupling device (reader)
VICC	Vicinity integrated circuit card (tag)
UID	Unique identifier

Symbols

a	Carrier amplitude without modulation
b	Carrier amplitude when modulated
f_c	Frequency of operating field (carrier frequency)
f_s	Frequency of subcarrier

Absolute Maximum Ratings

Parameter	Symbol	Conditions
Supply Voltage	V_{POS}	-0.3 to 7V
Voltage at any other pin except L1,L2	V_{pin}	VSS-0.3 to 3.6V
Storage temperature	T_{store}	-55 to +125V
Maximum AC current induced on L1, L2	I_{coil_RMS}	50mA
Electrostatic discharge ¹⁾	V_{ESD}	2000V

Table 1

Note 1: Human Body Model (HBM; 100pF, 1.5k Ohms) with reference to substrate VSS

Stresses above these listed maximum ratings may cause permanent damages to the device. Exposure beyond specified operating conditions may affect device reliability or cause malfunction.

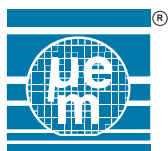
Handling Procedures

This device has built-in protection against high static voltages or electric fields; however, anti-static precautions must be taken as for any other CMOS component. Unless otherwise specified, proper operation can only occur when all terminal voltages are kept within the voltage range. Unused inputs must always be tied to a defined logic voltage level.

Operating Conditions

Parameter	Symbol	Min	Max	Unit
AC peak current induced on L1, L2 in operating conditions	I_{coilop}		30	mA
Operating temperature	T_{op}	-40	85	°C

Table 2



Electrical Characteristics

Please note that electrical parameters are preliminary.

Operating conditions (unless otherwise specified):

$V_{SS}=0V$

$f_{coil} = 13.56MHz$ Sine Wave

$V_{coil}=4V_{pp}$

$T_{op}=25^{\circ}C$

Parameter	Symbol	Conditions	Min.	Typ.	Max.	Unit
Resonance Capacitor Version 001	C_{r23}	$F = 13.56MHz$ $U = 2V_{rms}$	21.1	23.5	25.8	pF
Resonance Capacitor Version 500	C_{r97}	$F = 13.56MHz$ $U = 2V_{rms}$	87.3	97	106.7	pF
EEPROM write voltage	V_{WR}	Write Mode for EEPROM	1.8			V
Modulator Voltage Drop, low current	$V_{modiso1}$	$IL2 = 100\mu A$	0.6	0.85	1.1	V
Modulator Voltage Drop, high current	$V_{modiso2}$	$IL2 = 5mA$	1.3	1.55	1.85	V
EEPROM Cycling Endurance	N_{cy}	erase all/ write all	10^5			Cycles
EEPROM Retention	T_{ret}	$T_{op}=55^{\circ}C$ after 10^5 cycles	10			Year
Quiet Store Time ²⁾	T_{qstore}			3		Sec

Table 3

Note 2: Typical value is not guaranteed. Quiet Store Time is sensitive to light. There has to be provided additional light shielding during packaging.

Timing Characteristics

All timings are derived from the field frequency and are specified as a number of RF periods.

Parameter	Symbol	Min	Max	Unit
1 out of 4 mode				
Write Time ³⁾	T_{wr}	85 120	85 632	RF Periods
EAS Write Time ³⁾	T_{easw}	100 992	101 504	RF Periods
1 out of 256 mode				
Write Time	T_{wr}	-	86 656	RF Periods
EAS Write Time	T_{easw}	-	102 528	RF Periods
Initialization	T_{init}		9 408	
EAS Timeout ⁴⁾	T_{eas}	17 026	17 284	RF Periods

Table 4

Note 3: Min and Max value depends on last two bits send in message by the VCD

Note 4: Min value is the time from Power On Reset, Max value is time after last transmission from EM4133

Memory organisation

The 512 bit EEPROM are organized in 14 words of 32 bits.

Bit31 Bit0 Block nb

PASSWORD			0
RFU			1
Super User Memory (31..17)	EAS	Lock Block (15 ... 0)	2
User Word 0			3
User Word 1			4
User Word 2			5
User Word 3			6
User Word 4			7
User Word 5			8
User Word 6			9
User Word 7			10
User Word 8			11
UID (31..0)			12
UID (63..32)			13

Fig.3

Access rights

- ☐ Password is located at block 0. It is never readable but written only in Secure mode after a successful Login command.
- ☐ Memory Block #1 is reserved for future uses. No access to this block is possible.
- ☐ Super User Memory, EAS and the Lock Block area (block2) can be read by all users but written only in Secure mode.
- ☐ Lock block bits define which memory blocks are locked against programming/writing operations
- ☐ The UID (blocks 12 and 13) is factory programmed, definitely write protected and always readable.
- ☐ All user memory words (Blocks 3 to 13) are always readable and can be write protected with the corresponding lock bits. Write access rights to User Words (blocks 3 to 11) depend on appropriate Lock Block bit
- ☐ Secure mode is enabled only by a successful Login command (right password value)

Lock Block definition

Bit 31 Bit 17 Bit 16 Bit15 Bit14 Bit13 Bit12 Bit 11 ... 2 Bit 1 Bit 0

Block 2	Super User Memory	EAS	1	1	1	1	..	1	0
Protected Block	-	-	15	14	13	12		1	0

Table 5

Functional Description

1. Initial dialogue for vicinity cards

The dialogue between the VCD and the VICC (one or more VICCs may be present at the same time) is conducted through the following consecutive operations:

- ☐ Activation of the VICC by the RF operating field of the VCD
- ☐ VICC waits silently for a command from the VCD
- ☐ Transmission of a command by the VCD
- ☐ Transmission of a response by the VICC

These operations use the RF power transfer and communication signal interface specified in the following paragraphs and are performed according to the protocol defined in ISO/IEC 15693-3.

2. Power transfer

Power transfer to the VICC is accomplished by radio frequency via coupling antennas in the VCD and in the VICC. The RF operating field that supplies power to the VICC from the VCD is modulated for communication from the VCD to the VICC, as described in clause 3.

2.1 Frequency

The frequency f_c of the RF operating field is 13,56 MHz \pm 7 kHz.

2.2 Operating field

The VCD is capable of powering any single reference VICC (defined in the test methods) at manufacturer's specified positions (within the operating volume).

The VCD does not generate a field higher than the value specified in ISO/IEC 15693-1 (alternating magnetic field) in any possible VICC position.

Test methods for determining the VCD operating field are defined in ISO/IEC 10373-7.

3. Communications signal interface VCD to VICC

For some parameters several modes have been defined in order to meet different international radio regulations and different application requirements.

From the modes specified any data coding can be combined with any modulation.

However, combination of 1 out of 256 coding and 100% ASK modulation is not recommended as it may lead to synchronisation problems. Regulatory wise, this combination do not have any benefit. The following combinations are recommended:

- ☐ 1 out of 256 + 10% ASK for FCC part 15 compliance
- ☐ 1 out of 4 + 100 % ASK or 10% ASK for ETSI 300 330 compliance

3.1 Modulation

Communications between the VCD and the VICC takes place using the modulation principle of ASK. Two modulation indexes are used, 10% and 100%. The VICC decodes both. The VCD determines which index is used.

Depending on the choice made by the VCD, a "pause" will be created as described in Fig. 4.a and Fig. 4.b.

Modulation of the carrier for 100% ASK

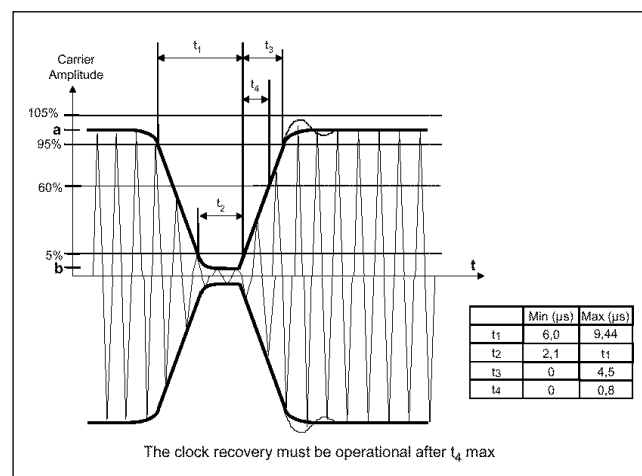


Fig.4.a

Modulation of the carrier for 10% ASK

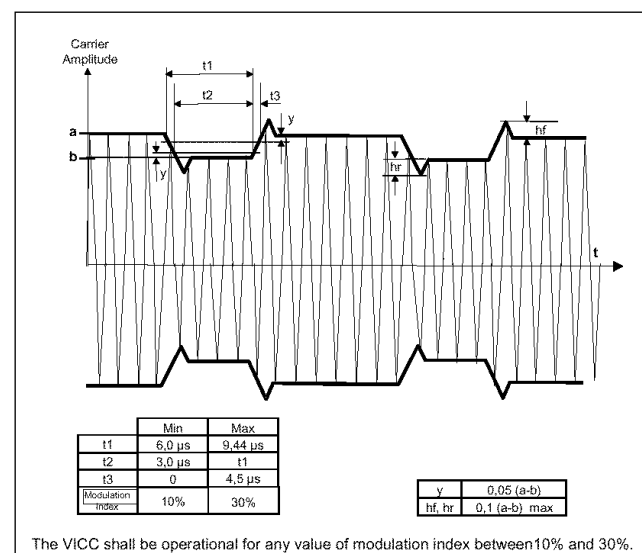


Fig.4.b

3.2 Data rate and data coding

Data coding is implemented using pulse position modulation.

Two data coding modes are supported by the VICC. The selection is made by the VCD and indicated to the VICC within the start of frame (SOF), as defined in chapter 4.3.

3.2.1 Data coding mode: 1 out of 256

The value of one single byte is represented by the position of one pause. The position of the pause on 1 of 256 successive time periods of 256/ f_c (\sim 18,88 μ s), determines the value of the byte. In this case the transmission of one byte takes \sim 4,833 ms and the resulting data rate is 1,65 kbits/s (f_c /8192). The last byte of the frame is completely transmitted before the EOF is sent by the VCD.

Fig. Figure 5 illustrates this pulse position modulation technique.

1 out of 256 coding mode

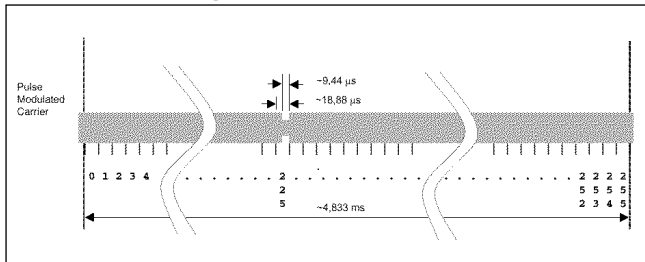


Fig. 5

In Fig. , data 'E1' = (11100001)_b = (225) is sent by the VCD to the VICC.

The pause occurs during the second half of the position of the time period that determines the value, as shown in Fig. 6.

Detail of one time period

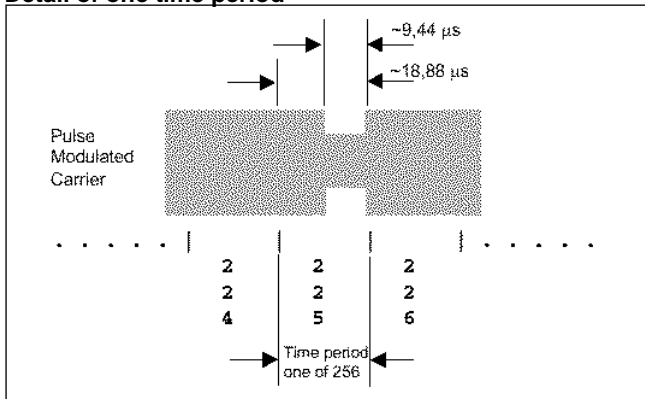


Fig. 6

Note 5: In case of usage of 1/256 coding with 100% modulation index, an accurate timing is needed to ensure proper decoding.

3.2.2 Data coding mode: 1 out of 4

Pulse position modulation for 1 out of 4 mode is used, in this case the position determines two bits at a time.

Four successive pairs of bits form a byte, where the least significant pair of bits is transmitted first. The resulting data rate is 26,48 kbits/s ($f_c/512$).

Fig. 7 illustrates the 1 out of 4 pulse position technique and coding.

1 out of 4 coding mode

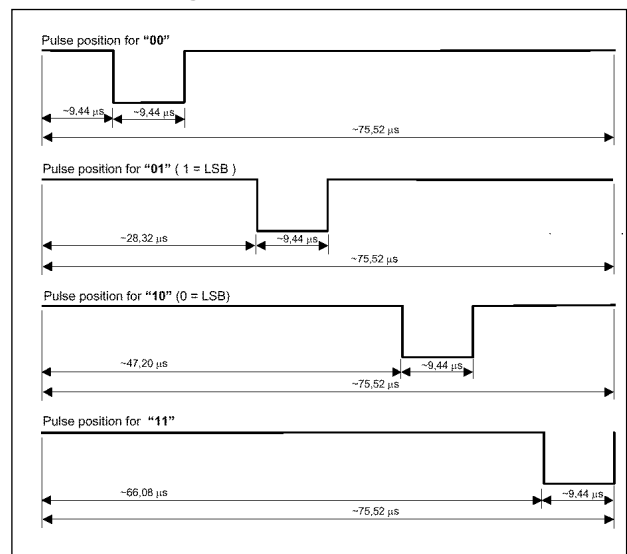


Fig. 7

For example Fig. 8 shows the transmission of 'E1' = (11100001)_b = 225 by the VCD.

1 out of 4 coding example

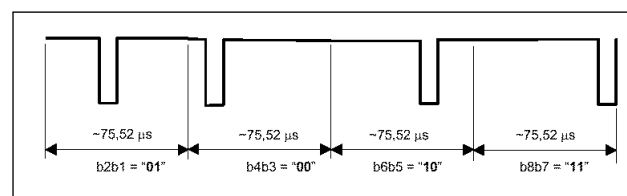


Fig. 8

3.3 VCD to VICC frames

Framing has been chosen for ease of synchronisation and independence of protocol.

Frames are delimited by a start of frame (SOF) and an end of frame (EOF) and are implemented using code violation. Unused options are reserved for future use by ISO/IEC.

The VICC is ready to receive a frame from the VCD within 300 μs after having sent a frame to the VCD.

The VICC is ready to receive a frame within Tinit of activation by the powering field. ISO defines 1 ms

3.3.1 SOF to select 1 out of 256 code

The SOF sequence described in Fig. 9 selects the 1 out of 256 data coding mode.

Start of frame of the 1 out of 256 mode

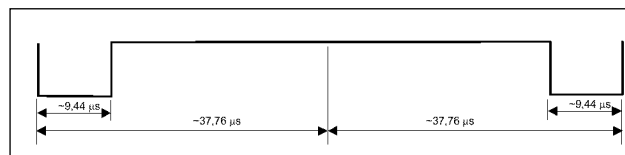


Fig. 9

3.3.2 SOF to select 1 out of 4 code

The SOF sequence described in Fig. 10 selects the 1 out of 4 data coding mode.

Start of frame of the 1 out of 4 mode

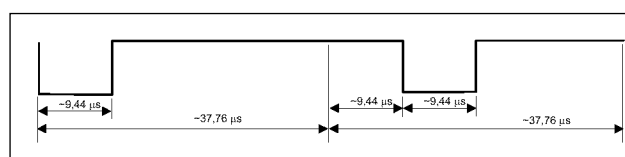


Fig. 10

3.3.3 EOF for either data coding mode

The EOF sequence for either coding mode is described in Fig. 11

End of frame for either mode

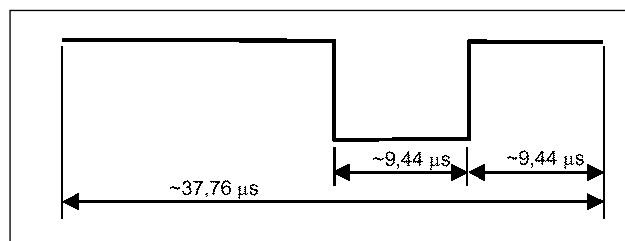


Fig. 11

4. Communications signal interface VICC to VCD

For some parameters several modes have been defined in order to, allow for use in different noise environments and application requirements.

4.1 Load modulation

The VICC is capable of communication to the VCD via an inductive coupling area whereby the carrier is loaded to generate a subcarrier with frequency f_s . The subcarrier is generated by switching a load in the VICC.

The load modulation amplitude is at least 10 mV when measured as described in the test methods.

Test methods for VICC load modulation are defined in International Standard ISO/IEC 10373-7.

4.2 Subcarrier

One or two subcarriers may be used as selected by the VCD using the first bit in the protocol header as defined in Table 6. The VICC supports both modes.

When one subcarrier is used, the frequency f_{s1} of the subcarrier load modulation is $f_c/32$ (423,75kHz).

When two subcarriers are used, the frequency f_{s1} is $f_c/32$ (423,75kHz), and the frequency f_{s2} is $f_c/28$ (484,28kHz).

If two subcarriers are present there is a continuous phase relationship between them.

4.3 Data rates

A low or high data rate may be used. The selection of the data rate is made by the VCD using the second bit in the protocol header as defined in Table 7. The VICC supports the data rates shown in Table 6.

Data Rate	Single Subcarrier	Dual Subcarrier
Low	6,62 kbits/s ($f_c/2048$)	6,67 kbits/s ($f_c/2032$)
High	26,48 kbits/s ($f_c/512$)	26,69 kbits/s ($f_c/508$)

Table 6

4.4 Bit representation and coding

Data are encoded using Manchester coding, according to the following schemes. All timings shown refer to the high data rate from the VICC to the VCD. For the low data rate the same subcarrier frequency or frequencies are used, in this case the number of pulses and the timing is multiplied by 4.

4.4.1 Bit coding when using one subcarrier

A logic 0 starts with 8 pulses of $f_c/32$ (~423,75 kHz) followed by an unmodulated time of $256/f_c$ (~18,88 μs), see Fig. 12.

Logic 0

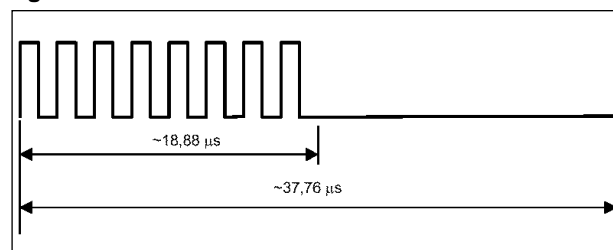


Fig. 12

A logic 1 starts with an unmodulated time of $256/f_c$ (~18,88 μs) followed by 8 pulses of $f_c/32$ (~423,75kHz), see Fig. 13.

Logic 1

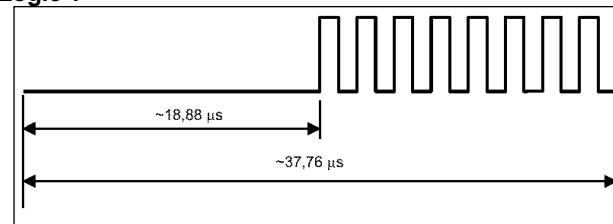


Fig. 13

4.4.2 Bit coding when using two subcarriers

A logic 0 starts with 8 pulses of $f_c/32$ (~423,75kHz) followed by 9 pulses of $f_c/28$ (~484,28kHz), see Fig. 14.

Logic 0

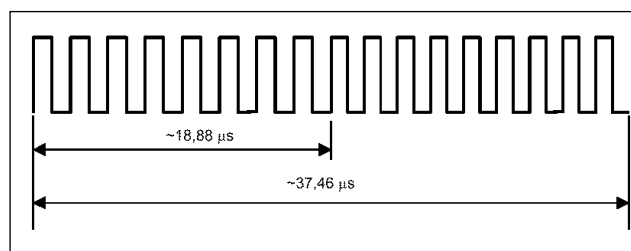


Fig. 14

A logic 1 starts with 9 pulses of $f_c / 28$ (~484,28 kHz) followed by 8 pulses of $f_c / 32$ (~423,75 kHz), see Fig. .

Logic 1

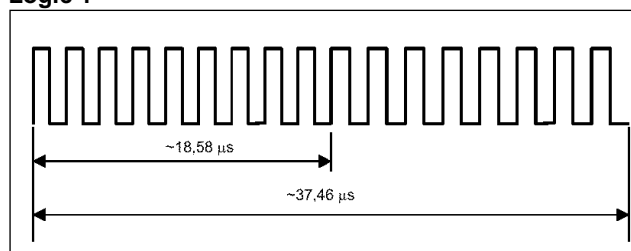


Fig. 15

4.5 VICC to VCD frames

Framing has been chosen for ease of synchronisation and independence of protocol.

Frames are delimited by a start of frame (SOF) and an end of frame (EOF) and are implemented using code violation. Unused options are reserved for future use by the ISO/IEC.

All timings shown below refer to the high data rate from the VICC to the VCD.

For the low data rate the same subcarrier frequency or frequencies are used, in this case the number of pulses and the timing is multiplied by 4.

The VCD is ready to receive a frame from the VICC within 300 μs after having sent a frame to the VICC.

4.5.1 SOF when using one subcarrier

SOF comprises 3 parts:

- ❑ an unmodulated time of $768 / f_c$ (~56,64 μs).
- ❑ 24 pulses of $f_c / 32$ (~423,75kHz).
- ❑ a logic 1 which starts with an unmodulated time of $256 / f_c$ (~18,88 μs), followed by 8 pulses of $f_c / 32$ (~423,75 kHz).

The SOF for one subcarrier is illustrated in Fig. 6.

Start of frame when using one subcarrier

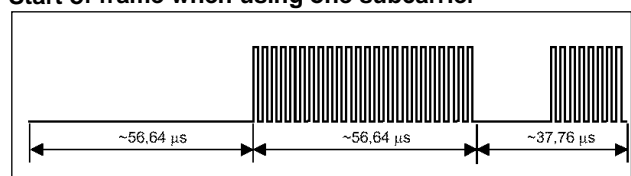


Fig. 16

4.5.2 SOF when using two subcarriers

SOF comprises 3 parts:

- ❑ 27 pulses of $f_c / 28$ (~484,28kHz).
- ❑ 24 pulses of $f_c / 32$ (~423,75kHz).
- ❑ a logic 1 which starts with 9 pulses of $f_c / 28$ (~484,28 kHz) followed by 8 pulses of $f_c / 32$ (~423,75kHz).

The SOF for 2 subcarriers is illustrated in Fig. 7.

Start of frame when using two subcarriers

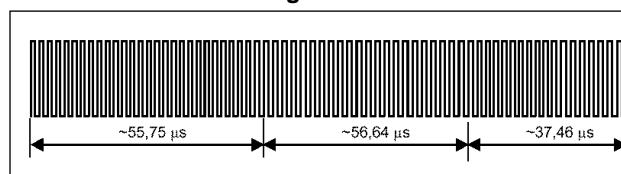


Fig. 17

4.5.3 EOF when using one subcarrier

EOF comprises 3 parts:

- ❑ a logic 0 which starts with 8 pulses of $f_c / 32$ (~423,75 kHz), followed by an unmodulated time of $256 / f_c$ (~18,88 μs).
- ❑ 24 pulses of $f_c / 32$ (~423,75kHz).
- ❑ an unmodulated time of $768 / f_c$ (~56,64 μs).

The EOF for 1 subcarrier is illustrated in Fig. 8.

End of frame when using one subcarrier

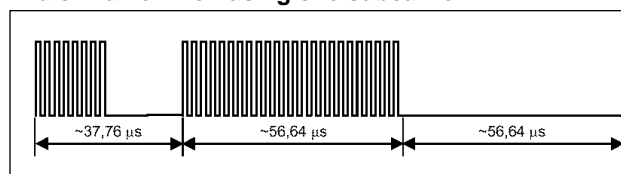


Fig. 18

4.5.4 EOF when using two subcarriers

EOF comprises 3 parts:

- ❑ a logic 0 which starts with 8 pulses of $f_c / 32$ (~423,75 kHz) followed by 9 pulses of $f_c / 28$ (~484,28 kHz).
- ❑ 24 pulses of $f_c / 32$ (~423,75kHz).
- ❑ 27 pulses of $f_c / 28$ (~484,28kHz).

The EOF for 2 subcarriers is illustrated in Fig. 9.

End of frame when using 2 subcarriers

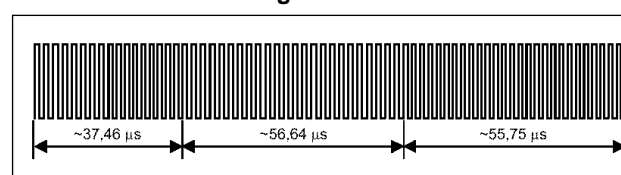


Fig. 19

5. Definition of data elements

5.1 Unique identifier (UID)

The VICCs are uniquely identified by a 64 bit unique identifier (UID). This unique number is used for addressing each VICC uniquely and individually, during the anticollision loop and for one-to-one exchange between a VCD and a VICC (addressed mode).

The UID is set permanently by the IC manufacturer in accordance with Fig. 20:

UID format

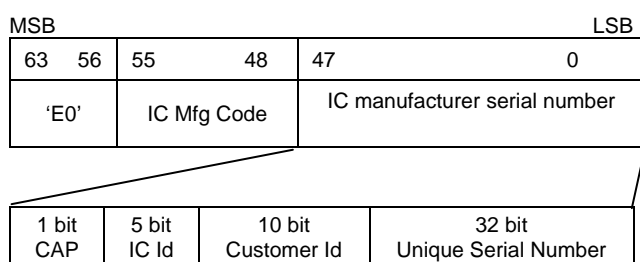


Fig. 20

The UID comprises:

- ☐ The 8 MSB bits are 'EO'
- ☐ The IC manufacturer code, on 8 bits according to ISO/IEC 7816-6:1996/Amd.1 EM-Microelectronic is identified by code 0x16.
- ☐ A unique serial number on 48 bits assigned by the IC manufacturer.

Note 5: 64 bit UID is stored in EEPROM. EM IC manufacturer code is programmed with the 0x16 value. 48 bits of IC manufacturer serial number are composed of 1 bit capacitor value, 5 bit IC code (different for each member of EM ISO 15693 family), 10 bit Customer Id and 32 bit unique serial number.

IC Id: "0x07" corresponds to EM4133.

CAP value bit:

- ☐ '0' corresponds to a Cres of 23.5pF
- ☐ '1' corresponds to a Cres of 97pF

5.2 Application family identifier (AFI)

EM4133 does not support AFI feature.

5.3 Block security status

The block security status is sent back by the VICC as a parameter in the response to a VCD request as specified in clause 10 (e.g. Read Multiple block). It is coded on one byte.

Block security status

Bit	Flag name	Value	Description
B1	Lock_flag	0	Not locked
		1	Locked
B2 to B8	RFU	0	

Fig. 21

5.4 CRC

The CRC is calculated in accordance with ISO/IEC 13239. Information on how to calculate the CRC can be found in annex C of ISO/IEC 15693-3 document.

The initial register content is all ones: 'FFFF'.

The two bytes CRC are appended to each request and each response, within each frame, before the EOF. The CRC is calculated on all the bytes after the SOF up to but not including the CRC field.

Upon reception of a request from the VCD, the VICC verifies that the CRC value is valid. If it is invalid, it will discard the frame and will not answer (modulate).

Upon reception of a response from the VICC, it is recommended that the VCD verify that the CRC value is valid. If it is invalid, actions to be performed are left to the responsibility of the VCD designer.

The CRC is transmitted least significant byte first.

Each byte is transmitted least significant bit first.

CRC bits and bytes transmission rules

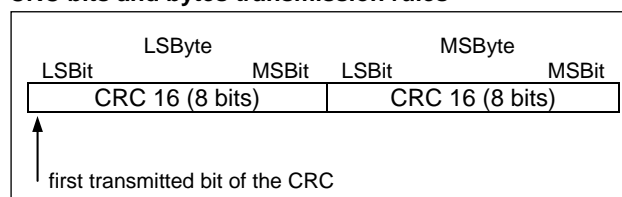


Fig. 22

6. Overall protocol description

6.1 Protocol concept

The transmission protocol (or protocol) defines the mechanism to exchange instructions and data between the VCD and the VICC, in both directions.

It is based on the concept of "VCD talks first".

This means that any VICC does not start transmitting (i.e. modulating according to ISO/IEC 15693-2) unless it has received and properly decoded an instruction sent by the VCD.

a) the protocol is based on an exchange of

- ☐ a request from the VCD to the VICC
- ☐ a response from the VICC(s) to the VCD

The conditions under which the VICC sends a response are defined in clause 9.1.

b) each request and each response are contained in a frame. The frame delimiters (SOF, EOF) are specified in 3.3.

c) each request consists of the following fields:

- ☐ Flags
- ☐ Command code

- ☐ Mandatory and optional parameters fields, depending on the command
- ☐ Application data fields
- ☐ CRC

d) each response consists of the following fields:

- ☐ Flags
- ☐ Mandatory and optional parameters fields, depending on the command
- ☐ Application data fields
- ☐ CRC

e) the protocol is bit-oriented. The number of bits transmitted in a frame is a multiple of eight (8), i.e. an integer number of bytes.

f) a single-byte field is transmitted least significant bit (LSBit) first.

g) a multiple-byte field is transmitted least significant byte (LSByte) first, each byte is transmitted least significant bit (LSBit) first.

h) the setting of the flags indicates the presence of the optional fields. When the flag is set (to one), the field is present. When the flag is reset (to zero), the field is absent.

i) RFU flags are set to zero (0).

6.2 Modes

The term mode refers to the mechanism to specify in a request the set of VICC's that answers to the request.

6.2.1 Addressed mode

When the Address_flag is set to 1 (addressed mode), the request contains the unique ID (UID) of the addressed VICC.

Any VICC receiving a request with the Address_flag set to 1 compares the received unique ID (address) to its own ID.

If it matches, it executes it (if possible) and returns a response to the VCD as specified by the command description.

If it does not match, it remains silent.

6.2.2 Non-addressed mode

When the Address_flag is set to 0 (non-addressed mode), the request does not contain a unique ID.

Any VICC receiving a request with the Address_flag set to 0 executes it (if possible) and returns a response to the VCD as specified by the command description.

If tag detects an error in received message (incorrect flags, out of memory, etc.) it doesn't respond in non-addressed mode. It returns error code only in case a message was addressed directly to this tag.

6.2.3 Select mode

EM4133 does not support Select mode.

6.3 Request format

The request consists of the following fields:

- ☐ Flags
- ☐ Command code (see clause 9)
- ☐ Parameters and data fields
- ☐ CRC (see 5.4)

General request format

SOF	Flags	Command code	Parameters	Data	CRC	EOF
-----	-------	--------------	------------	------	-----	-----

Fig. 23

6.3.1 Request flags

In a request, the field "flags" specifies the actions to be performed by the VICC and whether corresponding fields are present or not.

It consists of eight bits.

Request flags 1 to 4 definition

Bit	Flag name	Value	Description
b1	Sub-carrier_flag	0	A single sub-carrier frequency is used by the VICC
		1	Two sub-carriers are used by the VICC
b2	Data_rate_flag	0	Low data rate is used
		1	High data rate is used
b3	Inventory_flag	0	Flags 5 to 8 meaning is according to Table 8
		1	Flags 5 to 8 meaning is according to Table 9
b4	Protocol Extension_flag	0	No protocol format extension
		1	Protocol format is extended. Reserved for future use

Table 7

Note 6: Sub-carrier_flag refers to the VICC-to-VCD communication as specified in 4.3.

Note 7: Data_rate_flag refers to the VICC-to-VCD communication as specified in 4.3.

Request flags 5 to 8 definition when inventory flag is NOT set

Bit	Flag name	Value	Description
b5	Select_flag	0	EM4133 does not support Select feature. If this flag is set EM4133 will not respond
b6	Address_flag	0	Request is not addressed. UID field is not included. It is Executed by any VICC
		1	Request is addressed. UID field is included. It is executed only by the VICC whose UID matches the UID specified in the request
b7	Option_flag	0	Meaning is defined by the command description. It is set to 0 if not otherwise defined by the command
		1	Meaning is defined by the command description
b8	RFU	0	

Table 8

Request flags 5 to 8 definition when inventory flag is set

Bit	Flag name	Value	Description
b5	AFI_flag	0	EM4133 does not support AFI feature. If this bit is set EM4133 does not respond to Inventory command
b6	Nb_slots_flag	0	16 slots
		1	1 slot
b7	Option_flag	0	Meaning is defined by the command description. It is set to 0 if not otherwise defined by the command
		1	Meaning is defined by the command description
b8	RFU	0	

Table 9

6.4 Response format

The response consists of the following fields:

- ☐ Flags
- ☐ one or more parameter fields
- ☐ Data
- ☐ CRC (see 5.4)

General response format

SOF	Flags	Parameters	Data	CRC	EOF
-----	-------	------------	------	-----	-----

Fig. 24

6.4.1 Response flags

In a response, it indicates how actions have been performed by the VICC and whether corresponding fields are present or not.

Response flags 1 to 8 definition

Bit	Flag name	Value	Description
b1	Error_flag	0	No error
		1	Error detected. Error code is in the "Error" field.
b2	RFU	0	
b3	RFU	0	
b4	Extension_flag	0	No protocol format extension
		1	Protocol format is extended. Reserved for future use.
b5	RFU	0	
b6	RFU	0	
b7	RFU	0	
b8	RFU	0	

Table 10

6.4.2 Response error code

When the Error_flag is set by the VICC, the error code field is included.

EM4133 supports only error code 0x0F.

The device responds with an error code only if command was sent in addressed mode

There is no response from Tag:

- ☐ when Select or AFI flag is set
- ☐ when CRC error is detected
- ☐ when wrong flags are set in Inventory
- ☐ when command was sent in non-addressed mode
- ☐ when RFU or Protocol Extension flag is set

6.5 VICC states

A VICC can be in one of the 4 following states:

- ☐ Power-off
- ☐ Ready
- ☐ Quiet
- ☐ Quiet Storage

The transition between these states is specified in Fig..

EM4133 supports mandatory power-off, ready and quiet states.

6.5.1 Power-off state

The VICC is in the power-off state when it cannot be activated by the VCD.

6.5.2 Ready state

The VICC is in the Ready state when it is activated by the VCD. It processes any request where the select flag is not set.

6.5.3 Quiet state

When in the quiet state, the VICC processes any request where the Inventory_flag is not set and where the Address_flag is set. Reset To Ready command is accepted and executed also with address flag cleared.

6.5.4 Quiet Storage state

When Tagged items are moving on a conveyor, the position and orientation of the attached Tags are uncontrolled. In order for the conveyor Interrogator to power and communicate with Tags independent of Tag position and orientation it could generate a Interrogator field that is switched cyclically between the X, Y and Z direction orthogonal axes. A consequence of cycling the field is that Tags periodically lose power.

Special regard shall be given to management of power outages arising from the operation of orientation insensitive Interrogators. For example, where multiple Tags are being identified there is a requirement for identified Tags to be temporarily silenced so as not to interfere with the identification of any remaining Tags.

During these power outages ISO Quiet state could be lost. EM4133 supports a proprietary state called Quiet Storage which is kept during short power outages.

Quiet Storage state is entered by sending command Quiet Storage having the same syntax as ISO Stay Quiet. It has also the same behaviour as ISO Quiet State except:

- ☐ it is kept for Quiet Store Time when power is lost
- ☐ it could be released by Reset To Ready command with or without UID

The second feature allows to user release all tags in Quiet Storage state at once by only one command.

VICC state transition diagram

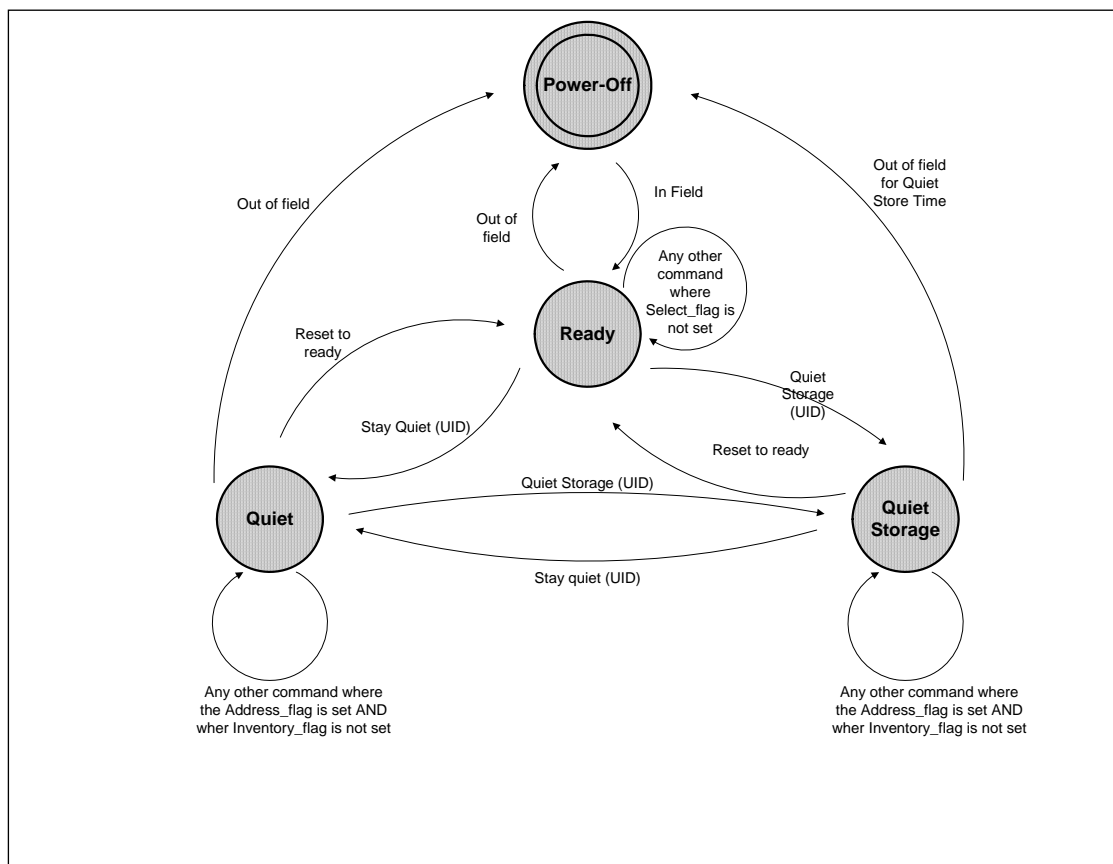


Fig.25

Note 1: The VICC state transition diagram shows only valid transitions. In all other cases the current VICC state remains unchanged. When the VICC cannot process a VCD request (e.g. CRC error, etc.), it stays in its current state.

7. Anticollision

The purpose of the anticollision sequence is to make an inventory of the VICCs present in the VCD field by their unique ID (UID).

The VCD is the master of the communication with one or multiple VICCs. It initiates card communication by issuing the inventory request.

The VICC sends its response in the slot determined or does not respond, according to the algorithm described in clause 7.2.

7.1 Explanation of an anticollision sequence

Fig. summarises the main cases that can occur during a typical anticollision sequence where the number of slots is 16.

The different steps are:

a) the VCD sends an inventory request, in a frame, terminated by a EOF. The number of slots is 16.

b) VICC 1 transmits its response in slot 0. It is the only one to do so, therefore no collision occurs and its UID is received and registered by the VCD;

c) the VCD sends an EOF, meaning to switch to the next slot.

d) in slot 1, two VICCs 2 and 3 transmits their response, this generates a collision. The VCD detects it and remembers that a collision was detected in slot 1.

e) the VCD sends an EOF, meaning to switch to the next slot.

f) in slot 2, no VICC transmits a response. Therefore the VCD does not detect a VICC SOF and decides to switch to the next slot by sending a EOF.

g) in slot 3, there is another collision caused by responses from VICC 4 and 5

h) the VCD then decides to send an addressed request (for instance a Read Block) to VICC 1, which UID was already correctly received.

i) all VICCs detect a SOF and exit the anticollision sequence. They process this request and since the request is addressed to VICC 1, only VICC1 transmit its response.

j) all VICCs are ready to receive another request. If it is an inventory command, the slot numbering sequence restarts from 0.

Note 8: The decision to interrupt the anticollision sequence is up to the VCD. It could have continued to send EOF's till slot 15 and then send the request to VICC 1.

Continued ...

Example 1:

- VCD:** SOF, Inventory request, EOF
- VICCs:** Response 1
- Timing:** Slot 0
- Comment:** No collision
- Time:** t1, T2, t1

Continued ...

Example 2:

- VCD:** Slot 1, EOF, Slot 2, EOF, Slot 3
- VICCs:** Response 2, Response 3, Response 4, Response 5
- Timing:** Slot 1, Slot 2, Slot 3
- Comment:** Collision, No VICC response, Collision
- Time:** t1, T3, t1

Continued ...

Example 3:

- VCD:** SOF, Request to VICC 1, EOF
- VICCs:** Response from VICC1
- Timing:** t2, t1

Note 9: t1, t2 and t3 are specified in clause 7.3.

Fig. 26

7.2 Request processing by the VICC

Principle of comparison between the mask value, slot number and UID

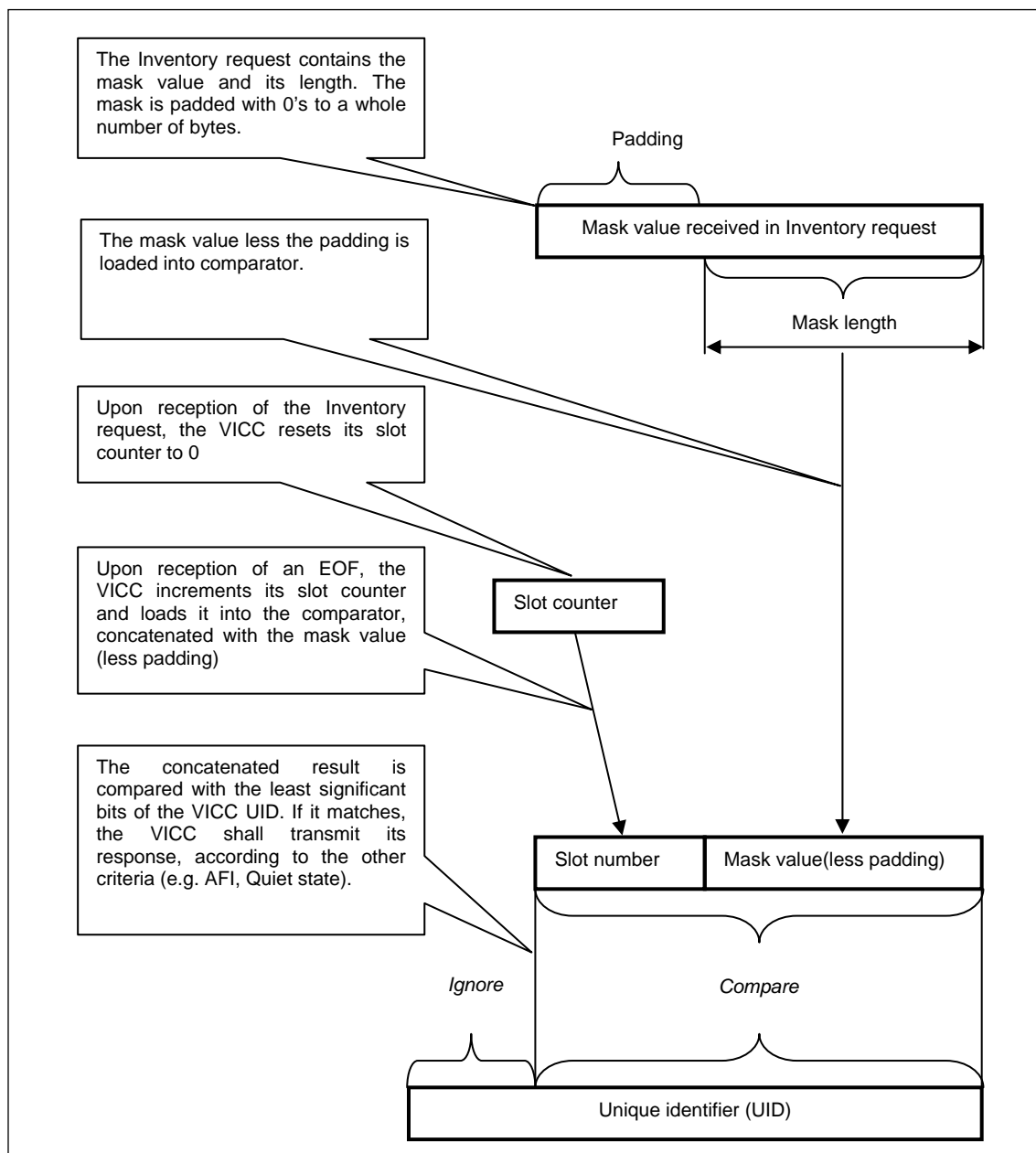


Fig.27

Note 10: When the slot number is 1 (Nb_slots_Flag is set to 1), the comparison is made only on the mask (without padding).

Upon reception of a valid request, the VICC processes it by executing the operation sequence specified in the following text in Fig.28. The step sequence is also graphically represented in **Error! Reference source not found..**

- ❑ NbS is the total number of slots (1 or 16)
- ❑ SN is the current slot number (0 to 15)
- ❑ SN_length is set to 0 when 1 slot is used and set to 4 when 16 slots are used

- ❑ LSB (value, n) function returns the n least significant bits of value
- ❑ "&" is the concatenation operator
- ❑ Slot_Frame is either a SOF or an EOF

```

SN= 0
if Nb_slots_flag then
    NbS =1 SN_length=0
    else NbS = 16 SN_length=4
endif
label1: f LSB(UID, SN_length + Mask_length) = LSB(SN, SN_length)&LSB(Mask, Mask_length) then
    transmit response to inventory request
endif
wait (Slot_Frame)
if Slot_Frame= SOF then
    Stop anticollision and decode/process request
    exit
endif
if SN<NbS-1 then
    SN = SN +1
    goto label1
    exit
endif

```

Fig.28

7.3 Request parameters

When issuing the Inventory command, the VCD sets the Nb_slots_flag to the desired setting and add after the command field the mask length and the mask value.

The mask length indicates the number of significant bits of the mask value. It can have any value between 0 and 60 when 16 slots are used and any value between 0 and 64 when 1 slot is used. LSB is transmitted first.

The mask value is contained in an integer number of bytes. LSB is transmitted first.

If the mask length is not a multiple of 8 (bits), the mask value MSB is padded with the required number of null (set to 0) bits so that the mask value is contained in an integer number of bytes.

The next field starts on the next byte boundary.

Inventory request format

SOF	Flags	Command	Mask length	Mask Value	CRC 16	EOF
	8 bits	8 bits	8 bits	0 to 8 bytes	16 bits	

Fig.29

Example of the padding of the mask

0000	0100 1100 1111
Pad	Mask value

Fig. 30

In the example of the Fig. 30, the mask length is 12 bits. The mask value MSB is padded with four bits set to 0.

To switch in next slot, an EOF has to be sent from a Reader. Any pulse with minimal specified width is considered as EOF in anti-collision sequence.

The first slot starts immediately after the reception of the request EOF.

To switch to the next slot, the VCD sends an EOF. The rules, restrictions and timing are specified in clause 7.3.

8. Timing specifications

The VCD and the VICC comply with the following timing specifications.

8.1 VICC waiting time before transmitting its response after reception of an EOF from the VCD

When the VICC has detected an EOF of a valid VCD request or when this EOF is in the normal sequence of a valid VCD request, it waits for a time t1 before starting to transmit its response to a VCD request or before switching to the next slot when in an inventory process (see 7.2 and 7.1)

t1 starts from the detection of the rising edge of the EOF received from the VCD (see 3.3.3).

Note 11: The synchronisation on the rising edge of the VCD-to-VICC EOF is needed for ensuring the required synchronisation of the VICC responses.

The minimum value of t1 is $t1_{min} = 4320/t_c$ (318,6 μs)

The nominal value of t1 is $t1_{nom} = 4352/t_c$ (320,9 μs)

The maximum value of t_1 is $t_{1\max} = 4384/f_c$ (323,3 μ s)

$t_{1\max}$ does not apply for Write alike requests. Timing conditions for Write alike requests are defined in the command descriptions.

If the VICC detects a 100% carrier modulation during this time t_1 , it resets its t_1 timer and waits for a further time t_1 before starting to transmit its response to a VCD request or to switch to the next slot when in an inventory process.

8.2 VICC modulation ignore time after reception of an EOF from the VCD

When the VICC has detected an EOF of a valid VCD request or when this EOF is in the normal sequence of a valid VCD request, it ignores any received 10 % modulation during a time t_{mit} .

t_{mit} starts from the detection of the rising edge EOF received from the VCD (see 3.3.3).

The minimum value of t_{mit} is $t_{\text{mit min}} = 4384/f_c$ (323,3 μ s) + t_{nrt}

where t_{nrt} is the nominal response time of a VICC.

t_{nrt} is dependent on the VICC-to-VCD data rate and subcarrier modulation mode (see 4.5.1, 4.5.2).

Note 12: The synchronisation on the rising edge of the VCD-to-VICC EOF is needed for ensuring the required synchronisation of the VICC responses.

8.3 VCD waiting time before sending a subsequent request

Remark: This chapter refers to VCD only.

a) When the VCD has received a VICC response to a previous request other than Inventory and Quiet, it waits a time t_2 before sending a subsequent request. t_2 starts from the time the EOF has been received from the VICC.

b) When the VCD has sent a Quiet request (which causes no VICC response), it waits a time t_2 before sending a subsequent request. t_2 starts from the end of the Quiet request EOF (rising edge of the EOF plus 9,44 μ s, see 3.3.3).

The minimum value of t_2 is $t_{2\min} = 4192/f_c$ (309,2 μ s).

Note 11: This ensures that the VICCs are ready to receive this subsequent request (see 4.5).

Note 12: The VCD should wait at least 1 ms after it activated the powering field before sending the first request, to ensure that the VICCs are ready to receive it (see 4.5).

c) When the VCD has sent an Inventory request, it is in an inventory process. See 8.4.

8.4 VCD waiting time before switching to the next slot during an inventory process

Remark: This chapter refers to VCD only.

An inventory process is started when the VCD sends an Inventory request. (see 7.2, 7.1, 9.3.1),

To switch to the next slot, the VCD may send either a 10 % or a 100 % modulated EOF independent of the modulation

index it used for transmitting its request to the VICC, after waiting a time specified in 8.4.1 and 8.4.2.

8.4.1 When the VCD has started to receive one or more VICC responses

Remark: This chapter refers to VCD only.

During an inventory process, when the VCD has started to receive one or more VICC responses (i.e. it has detected a VICC SOF and/or a collision), it :

- ☐ waits for the complete reception of the VICC responses (i.e. when a VICC EOF has been received or when the VICC nominal response time t_{nrt} has elapsed),
- ☐ waits an additional time t_2
- ☐ and then sends a 10 % or 100 % modulated EOF to switch to the next slot.

t_2 starts from the time the EOF has been received from the VICC (4.5.3,4.5.4).

The minimum value of t_2 is $t_{2\min} = 4192/f_c$ (309,2 μ s).

t_{nrt} is dependent on the VICC-to-VCD data rate and subcarrier modulation mode (4.5, 4.5.1, 4.5.2).

8.4.2 When the VCD has received no VICC response

Remark: This chapter refers to VCD only.

During an inventory process, when the VCD has received no VICC response, it waits a time t_3 before sending a subsequent EOF to switch to the next slot.

t_3 starts from the time the VCD has generated the rising edge of the last sent EOF.

a) If the VCD sends a 100 % modulated EOF, the minimum value of t_3 is

$$t_{3\min} = 4384/f_c (323,3 \mu\text{s}) + t_{\text{sof}}$$

b) If the VCD sends a 10 % modulated EOF, the minimum value of t_3 is

$$t_{3\min} = 4384/f_c (323,3 \mu\text{s}) + t_{\text{nrt}}$$

where

- ☐ t_{sof} is the time duration for a VICC to transmit an SOF to the VCD.
- ☐ t_{nrt} is the nominal response time of a VICC.

t_{nrt} and t_{sof} are dependent on the VICC-to-VCD data rate and subcarrier modulation mode (see 4.5, 4.5.1,4.5.2).

9. Commands

9.1 Command types

Four sets of commands are defined: mandatory, optional, custom and proprietary.

All VICCs with the same IC manufacturer code and same IC version number behave the same.

9.2 Command codes

Table 11 shows all implemented commands in EM4133.

Command codes

Command code	Type	Function	Active Flags							
			b1	b2	b3	b4	B5	b6	b7	b8
'01'	Mandatory	Inventory	x	x	1	0	0	X	0	0
'02'	Mandatory	Stay Quiet	x	x	0	0	0	1	0	0
'21'	Optional	Write single block	x	x	0	0	0	X	x	0
'23'	Optional	Read multiple blocks	x	x	0	0	0	X	x	0
'26'	Optional	Reset to ready	x	x	0	0	0	X	0	0
'A0'	Custom	Toggle EAS	x	x	0	0	0	0	0	0
'AA'	Custom	Quiet Storage	x	x	0	0	0	1	0	0
'E4'	Proprietary	Login	x	x	0	0	0	X	0	0

Table 11

x means used flag, can be 0 or 1.

9.3 Mandatory commands

Command code	Type	Function	Active Flags							
			b1	b2	b3	b4	B5	B6	b7	b8
'01'	Mandatory	Inventory	x	x	1	0	0	x	0	0
'02'	Mandatory	Stay Quiet	x	x	0	0	0	1	0	0

Table 12

9.3.1 Inventory (Command code = '01')

When receiving the Inventory request, the VICC performs the anticollision sequence.

The request contains:

- ☐ The flags,
- ☐ The Inventory command code
- ☐ The mask length
- ☐ The mask value
- ☐ The CRC

The Inventory_flag is set to 1.

The meaning of flags 5 to 8 is according to Table 9.

Inventory request format

SOF	Flags	Inventory	Mask length	Mask value	CRC 16	EOF
	8 bits	8 bits	8 bits	0-64 bits	16 bits	

Fig.31

The response contains:

- ☐ The DSFID – DSIFD feature is not supported by EM4133, zero value is returned
- ☐ The unique ID number

If the VICC detects an error, it remains silent.

Inventory response format

SOF	Flags	DSFID	UID	CRC 16	EOF
	8 bits	8 bits	64 bits	16 bits	

Fig.32

9.3.2 Stay quiet (Command code = '02')

When receiving the Stay quiet command, the VICC enters the quiet state and does not send back a response. There is NO response to the Stay quiet command.

When in quiet state:

- ☐ the VICC does not process any request where Inventory_flag is set,
- ☐ the VICC processes any addressed request

The VICC exits the quiet state when:

- ☐ reset (power off),
- ☐ receiving a Reset to ready request with UID. It goes then to the Ready state.
- ☐ receiving a Quiet Storage request. It goes then to Quiet Storage state.

Stay quiet request format

SOF	Flags	Stay quiet	UID	CRC 16	EOF
	8 bits	8 bits	64 bits	16 bits	

Fig.33

Request parameter:

UID (mandatory)

The Stay quiet command is always executed in Addressed mode (Address_flag is set to 1).

9.4 Optional Commands supported by EM4133

Command code	Type	Function	Active Flags							
			b1	b2	B3	b4	b5	b6	b7	b8
'21'	Optional	Write single block	x	x	0	0	0	x	x	0
'23'	Optional	Read multiple blocks	x	x	0	0	0	x	x	0
'26'	Optional	Reset to ready	x	x	0	0	0	x	0	0
			Sub-carrier	Data rate	Inventory	Protocol ext.	Select	Addressed	Option	RFU

Table 13

9.4.1 Write single block (Command code = '21')

When receiving the Write single block command, the VICC writes the requested block with the data contained in the request and report the success of the operation in the response.

If the Option_flag is not set, the VICC returns its response when it has completed the write operation starting after (Twr).

If Option_flag is set, the VICC waits for the reception of an EOF from the VCD and upon such reception returns its response. **The VCD must wait maximum Twr time before sending EOF** in order to ensure proper energy condition to VICC during EEPROM programming. Any pulse with minimal specified width is considered as.

Write single block request format

Command timing:

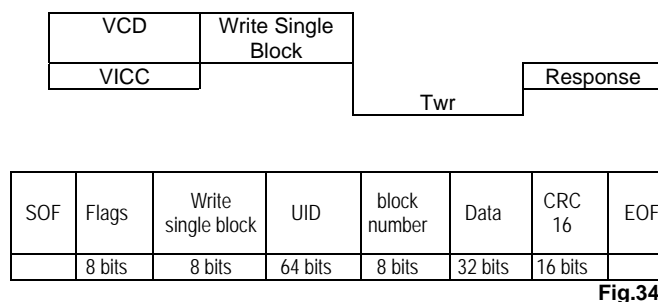


Fig.34

Request parameter:

- ☐ (Optional) UID
- ☐ Block number
- ☐ Data

Write single block response format when Error_flag is set

SOF	Flags	Error Code	CRC16	EOF
	8 bits	8 bits	16 bits	

Fig.35

Write single block response format when Error_flag is NOT set

SOF	Flags	CRC16	EOF
	8 bits	16 bits	

Fig.36

Response parameter:

Error_flag (and Error code if Error_flag is set)

9.4.2 Read multiple blocks (Command code = '23')

When receiving the Read multiple block command, the VICC reads the requested block(s) and send back their value in the response.

If the Option_flag is set in the request, the VICC returns the block security status, followed by the block value sequentially block by block.

If the Option_flag is not set in the request, the VICC returns only the block value.

The blocks are numbered from '00' to '0D' (0 to 13).

The number of blocks in the request is one less than the number of blocks that the VICC returns in its response.

EXAMPLE A value of '06' in the "Number of blocks" field requests to read 7 blocks. A value of '00' requests to read a single block.

Read multiple blocks request format

SOF	Flags	Read multiple block	UID	First block number	Number of blocks	CRC 16	EOF
	8 bits	8 bits	64 bits	8 bits	8 bits	16 bits	

Fig.37

Request parameter:

- ☐ (Optional) UID
- ☐ First block number
- ☐ Number of blocks

Read multiple blocks response format when Error_flag is set

SOF	Flags	Error Code	CRC16	EOF
	8 bits	8 bits	16 bits	

Fig.38

If VCD tries to read a block protected against Read the data bits and the block security status byte will be masked with '0'. It concerns block 0 and 1 which are never readable.

Read multiple block response format when Error_flag is NOT set

SOF	Flags	Block security status	Data	CRC 16	EOF
	8 bits	8 bits	32 bits	16 bits	
Repeated as needed					

Fig.39

Response parameter:

Error_flag (and Error code if Error_flag is set)

if Error_flag is not set (the following order is respected in the VICC response)

Block security status N (if Option_flag is set in the request)

Block value N

Block security status N+1 (if Option_flag is set in the request)

Block value N+1

etc.

where N is the first requested (and returned) block.

9.4.3 Reset to ready (Command code = '26')

When receiving a Reset to ready command, the VICC shall return to the Ready state.

Reset to ready request format

SOF	Flags	Reset to ready	UID	CRC 16	EOF
	8 bits	8 bits	64 bits	16 bits	

Fig. 40

Request parameter:

UID (optional)

Select response format when Error_flag is set

SOF	Flags	Error Code	CRC16	EOF
	8 bits	8 bits	16 bits	

Fig.41

Select block response format when Error_flag is NOT set

SOF	Flags	CRC16	EOF
	8 bits	16 bits	

Fig.42

Response parameter:

Error_flag (and Error code if Error_flag is set)

9.5 Custom commands

Command code	Type	Function	Active Flags							
			b1	b2	B3	b4	b5	b6	b7	b8
'A0'	Custom	Toggle EAS	x	x	0	0	0	0	0	0
'AA'	Custom	Quiet Storage	x	x	0	0	0	1	0	0
			Sub-carrier	Data rate	Inventory	Protocol ext.	Select	Addressed	Option	RFU

Table 14

9.5.1 Toggle EAS (Command code = 'A0')

As default, the EAS feature is not set. To activate the EAS, toggle command is sent by the VCD and a one bit EAS is used to apply the subcarrier $f_c/32$ at the input of the modulator. Toggle EAS command is accepted only in Secure mode upon successful Login with correctly signed CRC.

The EAS bit is stored in block 2. When EAS mode is on, the circuit modulates a constant sub-carrier of 423.75kHz ($f_c/32$).

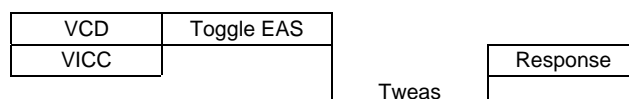
Between POR and start of EAS, a 1.2 ms pause is given to enable VCD to switch off EAS mode by sending the toggle EAS command. This timeout is reset when command is sent. It gives enough time to send Login and Write to disable EAS feature.

The VICC returns its response when it has completed the write operation starting after (Tweas)

If IC Mfg Code is not correct, the tag remains silent.

Toggle EAS request format

Command timing:



SOF	Flags	Toggle EAS	IC Mfg code	CRC 16	EOF
	8 bits	8 bits	8 bits	16 bits	

Fig.43

Request parameter:

IC manufacturer code according to ISO/IEC 7816-6:1996/Amd.1. 0x16 for EM-Microelectronic.

Toggle EAS response format when Error_flag is set

SOF	Flags	Error Code	CRC16	EOF
	8 bits	8 bits	16 bits	

Fig.44

EAS bit is located in LSB position of answered byte.

Toggle EAS response format when Error_flag is NOT set

SOF	Flags	EAS bit	CRC16	EOF
	8 bits	8 bits	16 bits	

Fig.45

9.5.2 Quiet Storage (Command code = 'AA')

When receiving the Quiet Storage command, the VICC enters the Quiet Storage state and does not send back a response. There is NO response to the Stay quiet command.

When in Quiet Storage state:

- ☐ the VICC does not process any request where Inventory_flag is set,
- ☐ the VICC processes any addressed request

The VICC exits the Quiet Storage state when:

- ☐ after Quite Store Time in reset (power off),
- ☐ receiving a Reset to ready request with or without UID. It goes then to the Ready state.
- ☐ receiving a Quiet State request with UID. It goes then to Quiet State

Quiet Storage request format

SOF	Flags	Quiet Storage	UID	CRC 16	EOF
	8 bits	8 bits	64 bits	16 bits	

Fig.46

Request parameter:

UID (mandatory)

The Quiet Storage command is always executed in Addressed mode (Address_flag is set to 1).

9.6 Proprietary commands

Command code	Type	Function	Active Flags							
			b1	b2	b3	b4	b5	b6	b7	B8
'E4'	Proprietary	Login	x	x	0	0	0	x	0	0
			Sub-carrier	Data rate	Inventory	Protocol ext.	Select	Addressed	Option	RFU

Table 15

Proprietary command is used because commands following Login have to be sent and received in Secure mode where all CRC16 are signed.

9.6.1 Login (Command code = 'E4')

The Login command enables Secure mode of EM4133.

The Login command has to include the correct password value. The sent password is compared with password stored in block 0 of EEPROM. If the password is incorrect error "0x0F" is sent back and tag is kept in normal state.

After a successful Login, the tag enters in the Secure mode.

Secure mode is lost in case of:

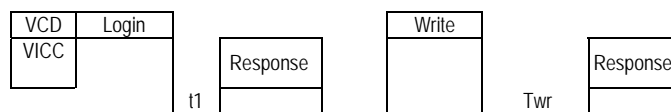
- ☐ power on reset
- ☐ Login with incorrect password is sent
- ☐ any situation when tag does not respond
 - ✓ CRC error
 - ✓ Wrong UID
 - ✓ IC Mfg Code is not correct
 - ✓ an error, on which tag should not respond, occurred (for ex. Select flag is set, non addressed mode and an error occurred)
 - ✓ Stay Quiet, Quiet Storage, Inventory command

In all other cases, the Secure mode is kept. Even an error occurs, the Secure mode is not lost.

If IC Mfg Code is not correct tag remains silent.

Login request format

Sequencing:



SOF	Flags	Login	IC Mfg code	UID	Password	CRC 16	EOF
	8 bits	8 bits	8 bits	64 bits	32 bits	16 bits	

Fig.47

Request parameter:

IC manufacturer code according to ISO/IEC 7816-6:1996/Amd.1. 0x16 for EM-Microelectronic.
(Optional) UID

Login response format when Error_flag is set

SOF	Flags	Error Code	CRC16	EOF
	8 bits	8 bits	16 bits	

Fig.48

Login response format when Error_flag is NOT set

SOF	Flags	CRC16	EOF
	8 bits	16 bits	

Fig.49

10. Chip Floorplan

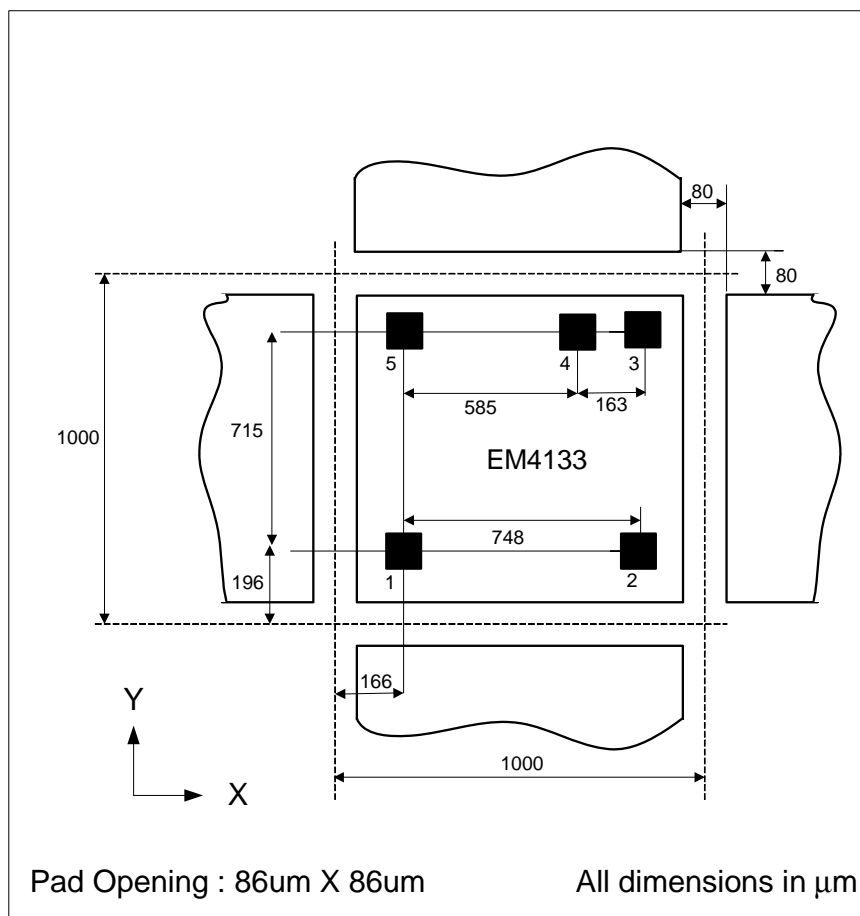
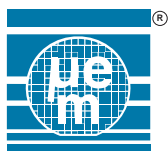


Fig.50

Pin description

Pin	Name	I/O	Description
1	COIL1	ANA	Antenna terminal
2	COIL2	ANA	Antenna terminal
3	VTest	Power	Active voltage pad: test purpose only
4	VSS	Power	Negative supply voltage: test purpose only
5	TEST_IO	I/O	Test Input/Output: test purpose only

Table 16



11. Ordering Information

From wafer from delivery, please, refer to EM4133 wafer specification document.

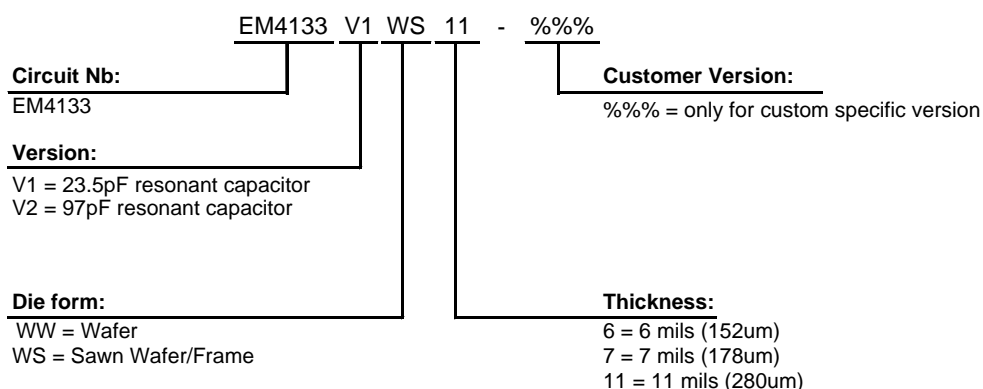


Fig.51

Standard Versions:

The versions below are considered standards and should be readily available. For the other delivery form, please contact EM Microelectronic-Marin S.A. Please make sure to give the complete part number when ordering.

Part Number	Package / Die Form	Delivery form / Bumping
EM4133V1WW11	Unsawn wafer, 11 mils thickness	No bump
EM4133V1WS11E	Sawn wafer, 11 mils thickness	Gold bump

Table 17

EM Microelectronic-Marin SA (EM) makes no warranty for the use of its products, other than those expressly contained in the Company's standard warranty which is detailed in EM's General Terms of Sale located on the Company's web site. EM assumes no responsibility for any errors which may appear in this document, reserves the right to change devices or specifications detailed herein at any time without notice, and does not make any commitment to update the information contained herein. No licenses to patents or other intellectual property of EM are granted in connection with the sale of EM products, expressly or by implications. EM's products are not authorized for use as components in life support devices or systems.